

DESCRIPTION

Solenoid valve 2 way normally closed with servo-assisted diaphragm

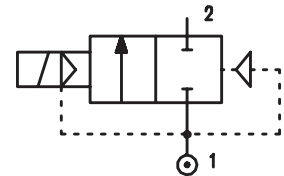
CONSTRUCTION

Body and cover	Brass
Armature tube	Stainless steel
Plunger and core	Stainless steel
Springs	Stainless steel
Seal material	NBR
	FPM
	EPDM

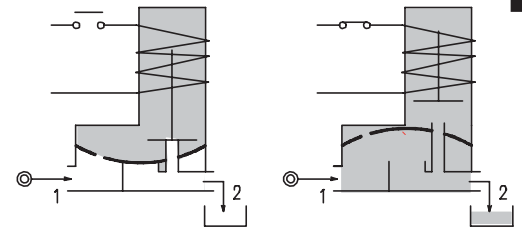


FEATURES

- Minimum differential pressure 0.15 bar
- Maximum allowable pressure 25 bar
- Maximum fluid viscosity 25cSt (mm²/s)
- Ambient temperature : with class F coil -10°C +55°C
with class H coil -10°C +80°C
- Preferred mounting position with vertical coil above



- OPTIONS :**
- Manual override
 - Electroless nickel plating
 - Explosion proof coil according to ATEX - EExmII Series 7 (up to G1")
 - Version with slow closing diaphragm
 - Version for vacuum applications (air/gas)
 - Version for use with oxygen



4

Certified versions: SVGW

CODE ① ②	Connection G ISO 228	Orifice mm	KV m ³ /h	Differential pressure bar			Nominal power			Coil		Seal ①	Temp. range °C
				Min	Max		AC Inrush	VA Holding	DC Watt	Series	Width		
					AC	DC							
E107B.....10///.....	1/4"	10	1.5	0.15	15	15	12	8	6.5	3	22	NBR=B	-10 +90
E107C.....10///.....	3/8"	10	1.7	0.15	15	15	12	8	6.5	3	22		
E107C.....12///.....	3/8"	12	2.2	0.15	15	15	12	8	6.5	3	22		
E107D.....12///.....	1/2"	12	2.5	0.15	15	15	12	8	6.5	3	22	EPDM=E	<+140
E107E.....18///.....	3/4"	18	5.5	0.15	13	13	12	8	6.5	3	22		
E107F.....25///.....	1"	24	10.2	0.15	10	10	12	8	6.5	3	22		
E107G.....30///.....	1"1/4	30	15	0.15	10	10	12	8	6.5	3	22	FPM=V	-10 +130
E107G.....37///.....	1"1/4	37	18	0.15	10	10	20	15	10	2	30		
E107H.....37///.....	1"1/2	37	21	0.15	10	10	20	15	10	2	30		
E107I.....50///.....	2"	50	36	0.15	10	10	20	15	10	2	30	NBR=B	-10 +90
E107MB75///.....	2"1/2	75	75	0.3	10	10	20	15	10	2	30		
E107RB75///.....	3"	75	84	0.3	10	10	20	15	10	2	30		

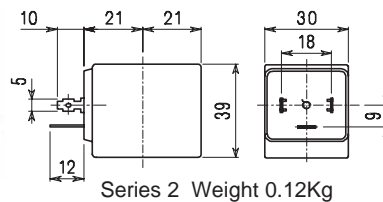
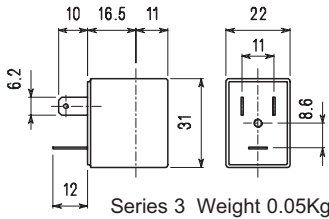
① Seal Example: E107DB12///301 NBR seal
 ② Coil Coil 24V DC

Note: For G2"1/2 and G3" NBR seal only

COILS	Alternating Current ~50/60Hz Volt							Direct Current Volt			Electrical connection	Connectors
	12	24	48	110	220 230	240	380	12	24	48		
Series 3 Width 22 Code ②	30A	30B	30C	30D	30E	30F	30G	300	301	302	DIN 46244	PG9 code 10348000
Series 2 Width 30 Code ②	20A	20B	20C	20D	20E	20F	20G	200	201	202	DIN 43650A	PG9 code 10349000

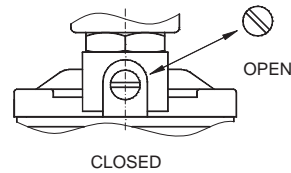
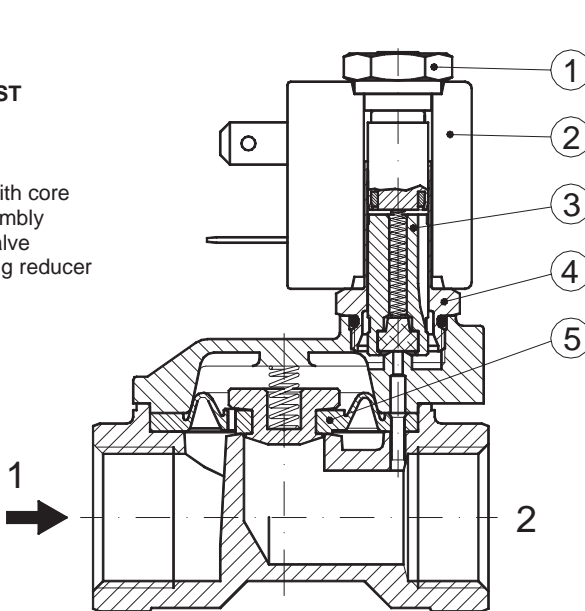
DESCRIPTION
 Class F insulation
 Voltage tolerance
 AC +15% -10%
 DC ± 10%
 Protection class
 IP65 with connector fitted
 IP00 without connector
 Continuous service ED100%

OPTIONS
 Class H insulation
 Cable attached
 Special coil powers
 Special coil voltages

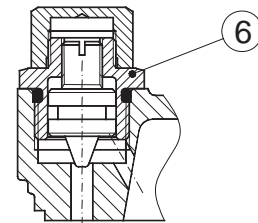


SPARE PARTS LIST

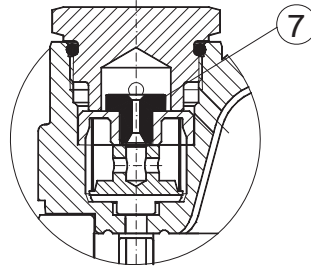
1. Coil fixing nut
2. Coil
3. Plunger
4. Armature tube with core
5. Diaphragm assembly
6. Speed control valve
Ø0.8-Ø1-Ø1.2
7. Water hammering reducer
Ø0.8-Ø1-Ø1.2



MANUAL OVERRIDE

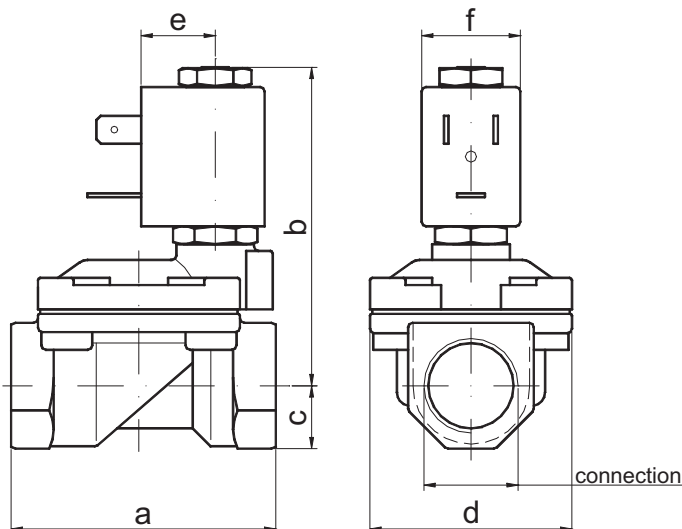


FOR G1"1/4-1"1/2-2"
Speed control valve



FOR G2"1/2-3"
Water hammering
reducer Ø0.8-Ø1-Ø1.2

OVERALL DIMENSION



CONNECTION	a	b	c	d	e	f	Weight Kg
G1/4" Ø10	49	65	11	32	16	22	0.25
G3/8" Ø10	49	65	11	32	16	22	0.25
G3/8" Ø12	59	70	14	45	16	22	0.45
G1/2"	59	70	14	45	16	22	0.45
G3/4"	79	74	18	55	16	22	0.66
G1"	96	85	20	72	16	22	1.05
G1"1/4 Ø30	119	92	25	85	16	22	1.80
G1"1/4	142	107	28	102	21	30	3.20
G1"1/2	142	107	28	102	21	30	2.90
G2"	158	117	35	119	21	30	4.50
G2"1/2	226	134	51	169	21	30	10
G3"	226	134	51	169	21	30	9.65