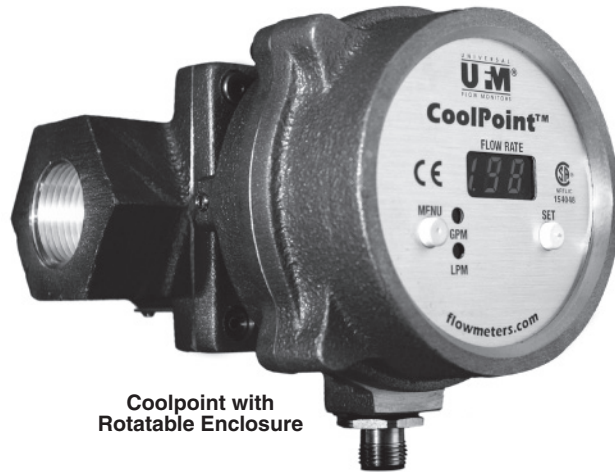


UNIVERSAL® Flow Monitors

Vortex Shedding Flowmeter for Water and Coolant

CoolPoint™



Coolpoint with
Rotatable Enclosure

Description

This flowmeter is made for water, water/glycol coolant or low viscosity fluids (Less than 50 SSU).

It has the following features:

- Flow transmitter 4-20 mA
- User configurable alarm set points or pulse output
- LED digital display
- No moving parts to clog or wear
- Certified CSA and CE
- 316SS available in some sizes
- Optional temperature transmitter 3/4" and larger

Electrical Specifications

- Output: 4-20 mA (3-wire)
- Alarm or Pulse Output: SPST Solid State Relay (NC or NO, selectable)
- Input Power: 10 - 30 VDC @ 80 mA
- Electrical Connection
 - Pin Connector (standard)
 - Pigtails (optional)
 - Junction Box with terminal strip (optional)

Material Specifications

Flow bodies of brass with PVDF (316SS bodies available in quarter and half inch sizes). Viton seals standard, Kalrez™ optional.

Stig Wahlström AB 

Box 64, 123 22 Farsta
Fax: 08 605 81 74, Tel: 08 683 33 00
E-post: mailbox@wahlstrom.se
Webbplats: www.wahlstrom.se

User-Configurable Options

Features that are selectable include:

- Engineering units (GPM, LPM, Fahrenheit or Celsius)
- Selectable alarm state (N.O. or N.C.)
- Set point or pulse output
- Rotatable control box standard for all units except for CP2, CP4 or CP6 (F1 or F2)

Instrument Specifications

- Flow
 - Visual readout: 3 digit LED, 0.3" digit height
 - Response time: user selectable from 0.9 to 7.5 seconds, based on the internal digital filter setting for flow noise rejection and signal averaging
 - Alarm: 5% F.S. deadband
 - Accuracy: $\pm 2\%$ F.S.
 - Repeatability: $\pm .25\%$ of indicated flow
 - Turndown: 10:1
 - Enhanced Performance: 20:1 turndown and $\pm 1\%$ F.S. accuracy available
- Temperature
 - Response time: 1.8 seconds to 63% of change
 - Alarm: $\pm 2\%$ deadband
 - Accuracy: $\pm 1\%$ F.S.
 - Repeatability: $\pm .25\%$ of indicated flow
 - Output: 4 mA @32°F, 20mA @210°F linear
- Pressure
 - 300 PSIG (20 Bar) operating pressure (2" and lower)
 - 200 PSIG (13 Bar) operating pressure (3" & 4")
- General
 - Fluid temperature limits: 35-210°F (2-99°C)
 - Enclosure rating: IP 65, Type 1, 3, 4, 12 and 13
- Pipe Connections:
 - NPT, BSPP & BSPT Female for 1/4" - 2", ANSI Class 150 R.F. Flanges for 3" & 4"

How To Order Select the appropriate symbols to build a model code:

STANDARD CONSTRUCTION FOR BASIC PRODUCTS

FLOW ONLY	Model Code	Pipe Size Inches	Thread or Connection Type	Max Flow Rate GPM (LPM)	10:1 Turndown Min Flow Rate GPM (LPM)	20:1 Turndown Min Flow Rate GPM (LPM)
	CP2	1/4	NPT	4 (15)	0.4 (1.5)	N/A (N/A)
	CP4	1/2	NPT	12 (45)	1.2 (4.5)	0.6 (0.75)
	CP6	3/4	NPT	25 (95)	2.5 (9.5)	1.25 (4.75)
	CP8	1	NPT	50 (190)	5.0 (19.0)	2.5 (9.5)
	CP12	1 1/2	NPT	100 (380)	10.0 (38.0)	5 (19)
	CP16	2	NPT	200 (750)	20.0 (75.0)	10 (37.5)
	CP24	3	ANSI RF	300 (1136)	30.0 (114)	N/A (N/A)
	CP32	4	ANSI RF	600 (2271)	60.0 (227)	N/A (N/A)

Standard models have fixed flow rates for each pipe size, brass construction, viton seals, 4-20mA output with programmable set point or pulse out selectable.

Example: CP12 is an 1 1/2 inch flowmeter with above characteristics.

FLOW AND TEMPERATURE	Model Code	Pipe Size Inches	Thread or Connection Type	Max Flow Rate GPM (LPM)	10:1 Turndown Min Flow Rate GPM (LPM)	20:1 Turndown Min Flow Rate GPM (LPM)
	CT6	3/4	NPT	25 (95)	2.5 (9.5)	1.25 (4.75)
	CT8	1	NPT	50 (190)	5.0 (19.0)	2.5 (9.5)
	CT12	1 1/2	NPT	100 (380)	10.0 (38.0)	5 (19)
	CT16	2	NPT	200 (750)	20.0 (75.0)	10 (37.5)
	CT24	3	ANSI RF	300 (1136)	30.0 (114)	N/A (N/A)
	CT32	4	ANSI RF	600 (2271)	60.0 (227)	N/A (N/A)

For Special Options - Added symbols required.

Example: CP12-T2 is a standard model with BSPT threads.

SPECIAL OPTIONS AVAILABLE

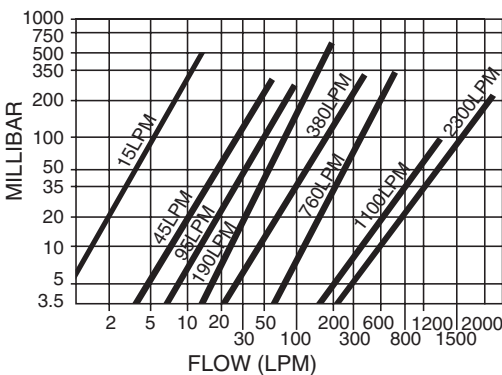
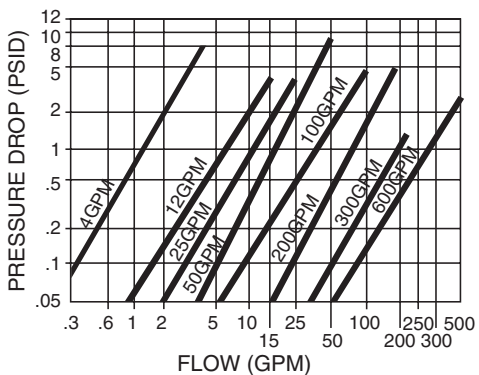
Thread type or connection type	Symbol	Flow rate GPM (LPM)	Symbol	Body material	Symbol	Seal material	Symbol	Switch and electronic options	Symbol	Connector or conduit box	Symbol	Enhanced Performance	Symbol
BSPT	T2	4 (15)	F1	316 SS	M2	Kalrez	S2	2 set points, no transmitter	E2	Pig tails	C2	20:1 Turndown =1% Accuracy	W1
BSPP	T3	12 (45)	F2					1 set point, pulse out	E3	Conduit box, terminal strip	C3		
		25 (95)	F3										
		50 (190)	F4										
		100 (380)	F5										

SPECIAL OPTION AVAILABILITY BY PIPE SIZE AND UNIT TYPE

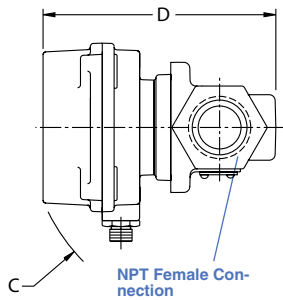
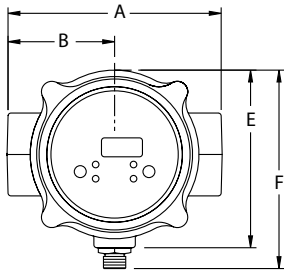
Model Code	Pipe size in inches	Thread or Connection Type	Flow rate GPM (LPM)	Symbol	Body material	Symbol	Seal material	Symbol	Switch and electronic options	Symbol	Connector or conduit box	Symbol	Enhanced Performance	Symbol
CP2	1/4		4 (15)	T2, T3		M2		S2		E2, E3		C2, C3		
CP4	1/2		12 (45)	T2, T3		M2		S2		E2, E3		C2, C3		W1
CP6	3/4		25 (95)	T2, T3		M2 with F2 or F1 only		S2		E2, E3		C2, C3		W1
CT6	3/4		25 (95)	T2, T3				S2		E2, E3		C2, C3		W1
CT8	1		50 (190)	T2, T3				S2		E2, E3		C2, C3		W1
CT12	1 1/2		100 (380)	T2, T3				S2		E2, E3		C2, C3		W1
CT16	2		200 (750)	T2, T3				S2		E2, E3		C2, C3		W1
CT24	3		300 (1136)					S2		E2, E3		C2, C3		
CT32	4		600 (2271)					S2		E2, E3		C2, C3		

*CP6-F2 or F1 has a non-rotatable box.

PRESSURE DROP CHARTS



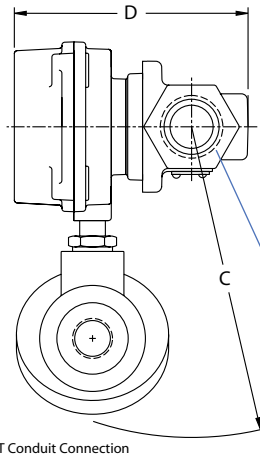
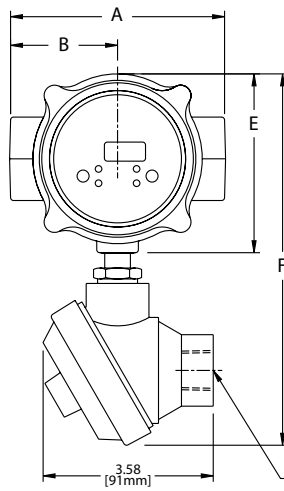
INSTALLATION DRAWING – BASIC METERS



Size	A	B	C	D	E	F
CP2, CP4, CP6-F1 & F2	3.25 [83mm]	1.62 [41mm]	3.13 [80mm]	4.07 [103mm]	2.31 [59mm]	2.73 [94mm]
CP6, CT6 CP8 & CT8	4.50 [113mm]	2.25 [57mm]	4.04 [103mm]	4.92 [125mm]	3.75 [95mm]	4.19 [113mm]
CP12,CT12 CT16 & CP16	6.75 [171mm]	3.37 [86mm]	4.71 [120mm]	6.14 [156mm]	3.75 [95mm]	4.19 [106mm]

**NOTE: The following units do not have a rotatable enclosure:
CP2, CP4, CP6-F1 and CP6-F2**

INSTALLATION DRAWING – METERS WITH OPTIONAL JUNCTION BOX

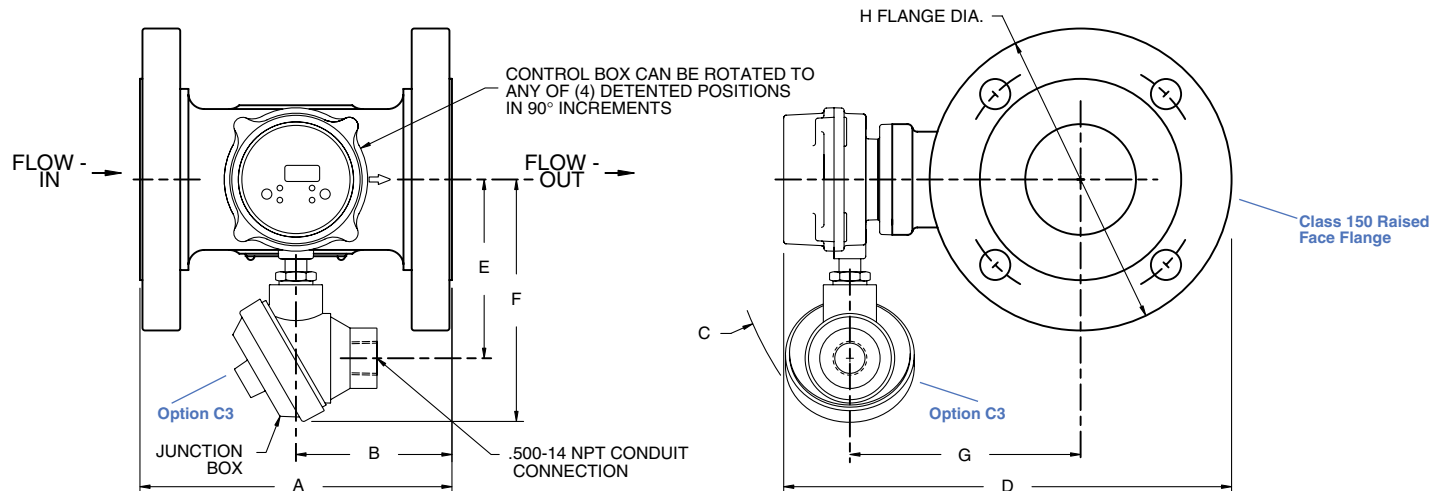


Size	A	B	C	D	E	F
CP2, CP4, CP6-F1 & F2	3.25 [83mm]	1.62 [41mm]	5.42 [138mm]	4.07 [103mm]	2.31 [59mm]	6.39 [162mm]
CP6, CT6, CP8 & CT8	4.50 [114mm]	2.25 [57mm]	6.52 [166mm]	4.92 [125mm]	3.75 [95mm]	7.79 [198mm]
CP12, CT 12 CT16 & CP16	6.75 [171mm]	3.37 [86mm]	6.87 [175mm]	6.14 [156mm]	3.75 [95mm]	7.79 [198mm]

**NOTE: The following units do not have a rotatable enclosure:
CP2, CP4, CP6-F1 and CP6-F2**

INSTALLATION DRAWING – 3" AND 4" PORT SIZE

Size	A	B	C	D	E	F	G	H
CP24 CT24	7.75 [197mm]	3.88 [99 mm]	8.90 [226 mm]	11.13 [283 mm]	4.44 [113 mm]	6.03 [153 mm]	5.73 [146 mm]	7.50 [191 mm]
CP32 CT32	10.75 [273 mm]	5.38 [137 mm]	9.46 [240 mm]	12.57 [319 mm]	4.44 [113 mm]	6.03 [153 mm]	6.43 [163 mm]	9 [229 mm]

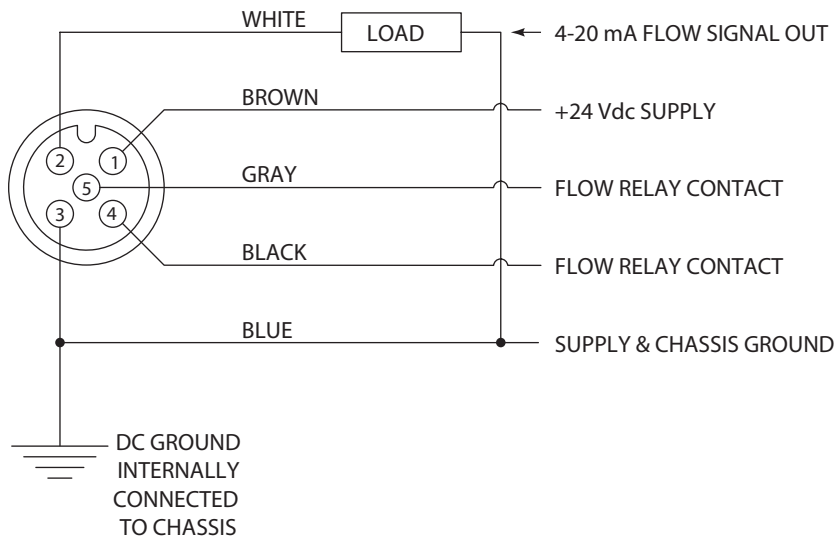


ACCESSORY CABLES AVAILABLE FOR PIN CONNECTOR METERS

Series	Description	Length in Meters	Part Number
CP	5 pin female	1	6241-1M
		3	6241-3M
		10	6241-10M
CT	8 pin female	2	6242-2M
		5	6242-5M
		10	6242-10M

PIN CONNECTOR PINOUTS

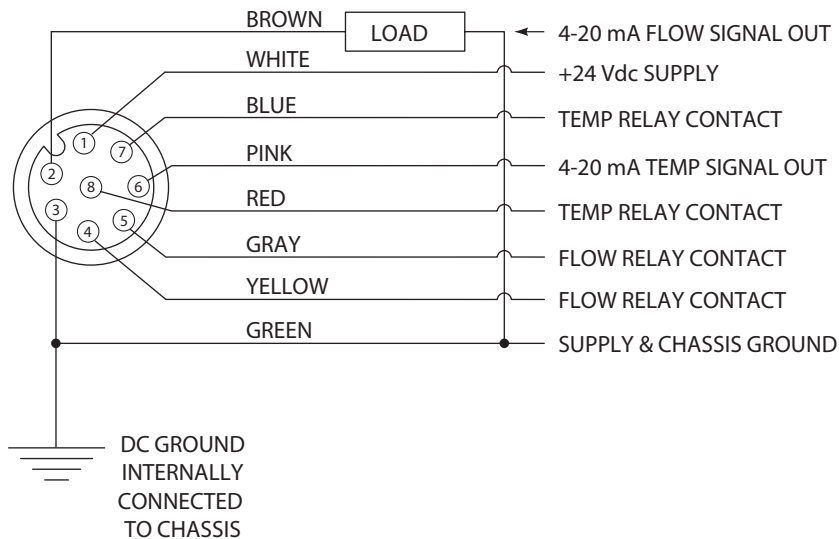
CP (FLOW ONLY)



PIN CONFIGURATION:

- 1: + 24 VDC power supply
- 2: 4-20 mA flow signal out
- 3: power supply ground
- 4: flow relay contact
- 5: flow relay contact

CT (FLOW AND TEMPERATURE)



PIN CONFIGURATION:

- 1: + 24 VDC power supply
- 2: 4-20 mA flow signal out
- 3: power supply ground
- 4: flow relay contact
- 5: flow relay contact
- 6: 4-20 mA temp signal out
- 7: temp relay contact
- 8: temp relay contact